

***NO MORE LAME EXCUSES!  
USING WHAT IS AVAILABLE  
TO GET IT RIGHT!***

**Neil Baker, Bakers of Haselbury Plucknett**

**Jon Reader, Synergy Farm Health**

**Farm Health Planning - Coordinated by the Cattle Health and Welfare Group**

# UK Situation 2010

- ▣ 222 farms
- ▣ 36% average prevalence
- ▣ 90% of farmers did not perceive lameness a problem.

(Leach et al. 2010)

- ▣ If 36% of cows lame in UK:
  - 1.86 million dairy cows (Kite)
  - 670,000 lame cows
  - Or
  - 670,000 cows in pain!!!!!!

# Effects of lameness:

- ▣ Milk Yield losses
  - 1000 litres per lactation
  - 45 days before change in mobility score
  - 4 months before clinical lameness treated
- ▣ Fertility
- ▣ Culling
- ▣ Labour
- ▣ Welfare
- ▣ Cost of Sole Ulcer - £519



# Q.1 How do you monitor lameness on your unit?

- 1) I don't
- 2) I use my treatment records from my diary.
- 3) I periodically subconsciously score my cows at milking/handling but do not use a recognised scoring system.
- 4) I score the whole herd every six months using the Dairy Co Mobility Score.
- 5) I score the cows at least monthly using the Dairy Co Mobility Score.
- 6) A non farm staff member scores the whole herd (including dry cows) at least monthly using the Dairy Co Mobility Score.

# Results.

# Rushywood Farm





- ▣ Neil Baker
- ▣ 1100 Cows
- ▣ 10,000 litres
- ▣ 80 Point Rotary
- ▣ Deep sand cubicles
- ▣ Mobility Score fortnightly



# Mobility Scoring at Rushywood.

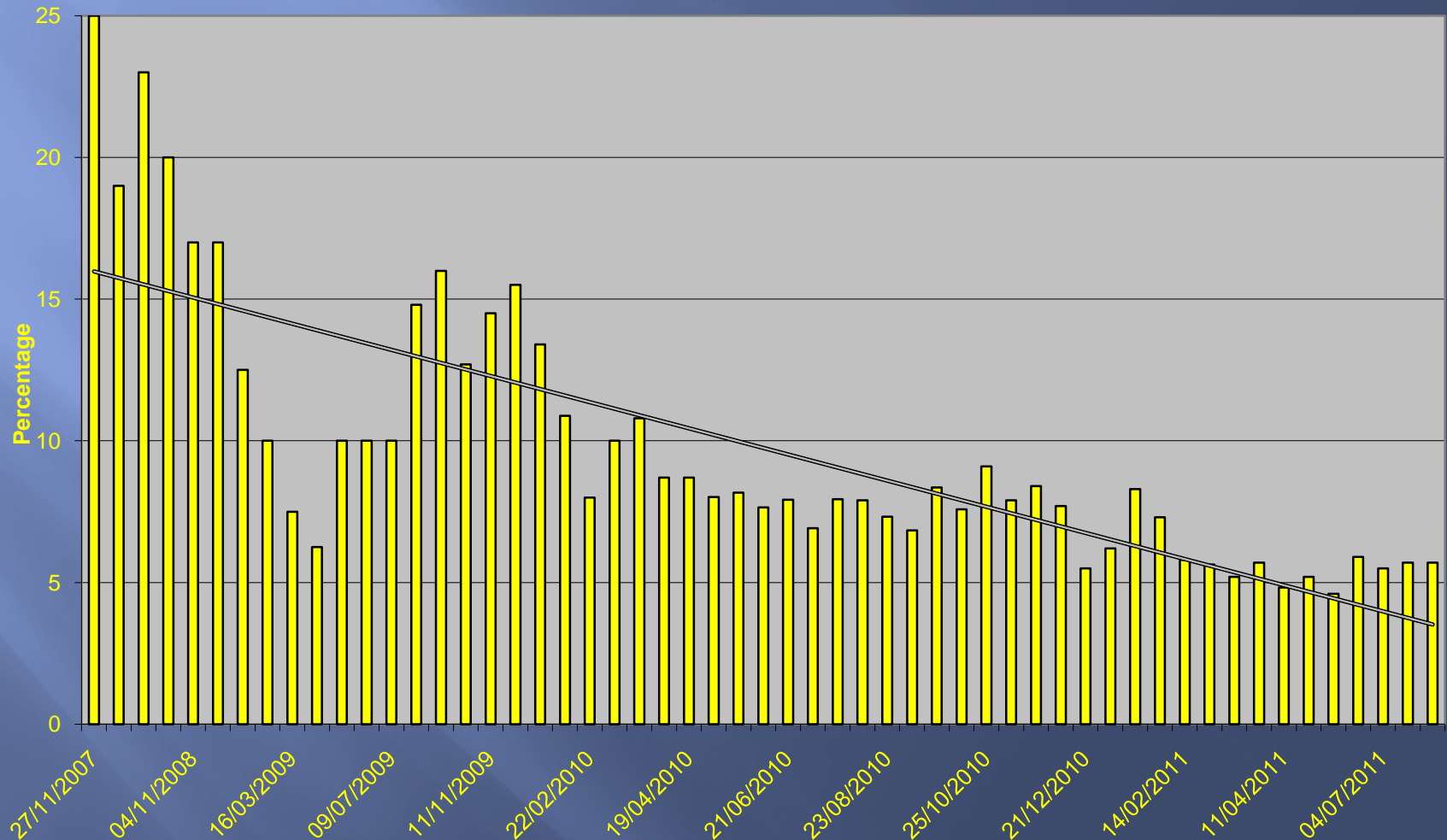


## DairyCo Mobility Score

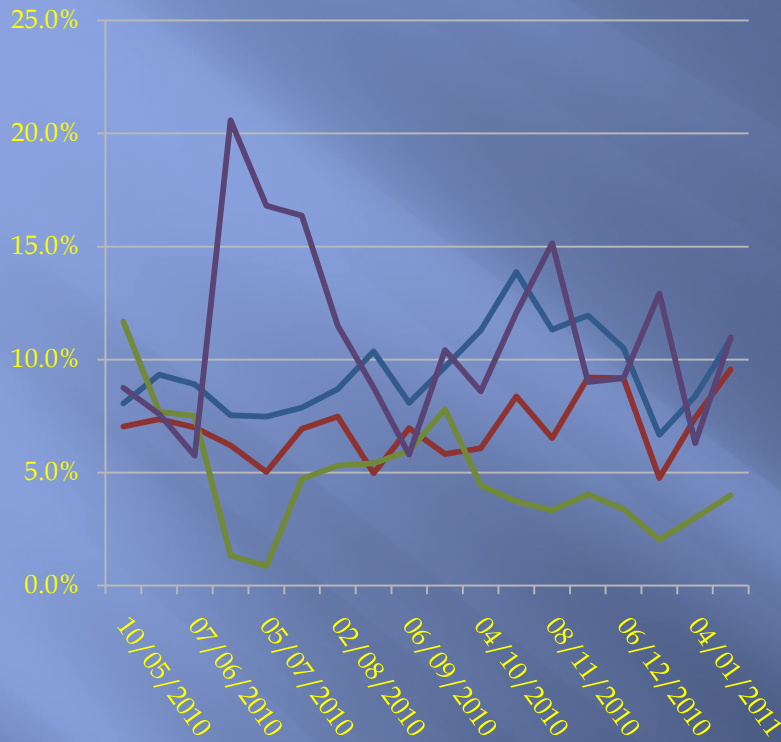
Category of lameness	Score	Description of lameness	Suggested actions
<b>Good mobility</b> 	0	Walks with even weight bearing and rhythm on all four feet, with a flat back.  Long, fluid strides possible.	<ul style="list-style-type: none"> <li>No action needed.</li> <li>Routine (preventative) foot trimming when/if required.</li> <li>Record mobility at next scoring session.</li> </ul>
<b>Imperfect mobility</b> 	1	Steps uneven (rhythm or weight bearing) or strides shortened; affected limb or limbs not immediately identifiable.	<ul style="list-style-type: none"> <li>Could benefit from routine (preventative) foot trimming when/if required.</li> <li>Further observation recommended.</li> </ul>
<b>Impaired mobility</b> 	2	Uneven weight bearing on a limb that is immediately identifiable and/or obviously shortened strides (usually with an arch to the centre of the back).	<ul style="list-style-type: none"> <li>Lame and likely to benefit from treatment.</li> <li>Foot should be lifted to establish the cause of lameness before treatment.</li> <li>Should be attended to as soon as practically possible.</li> </ul>
<b>Severely impaired mobility</b> 	3	Unable to walk as fast as a brisk human pace (cannot keep up with the healthy herd) and signs of score 2.	<ul style="list-style-type: none"> <li>Very lame.</li> <li>Cow will benefit from treatment.</li> <li>Cow requires urgent attention, nursing and further professional advice.</li> <li>Cow should not be made to walk far and kept on a straw yard or at grass.</li> <li>In the most severe cases, culling may be the only possible solution.</li> </ul>

# Dramatic drop in Lame Cows.

Total Lame Cows

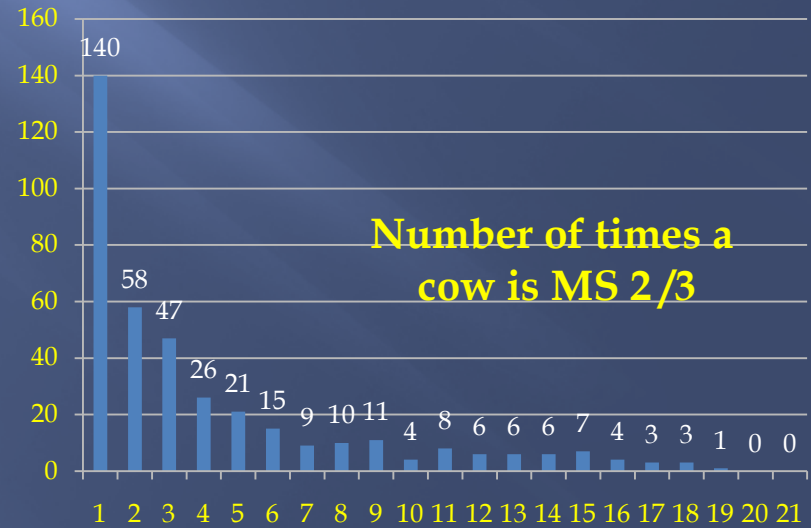


# MS analysis



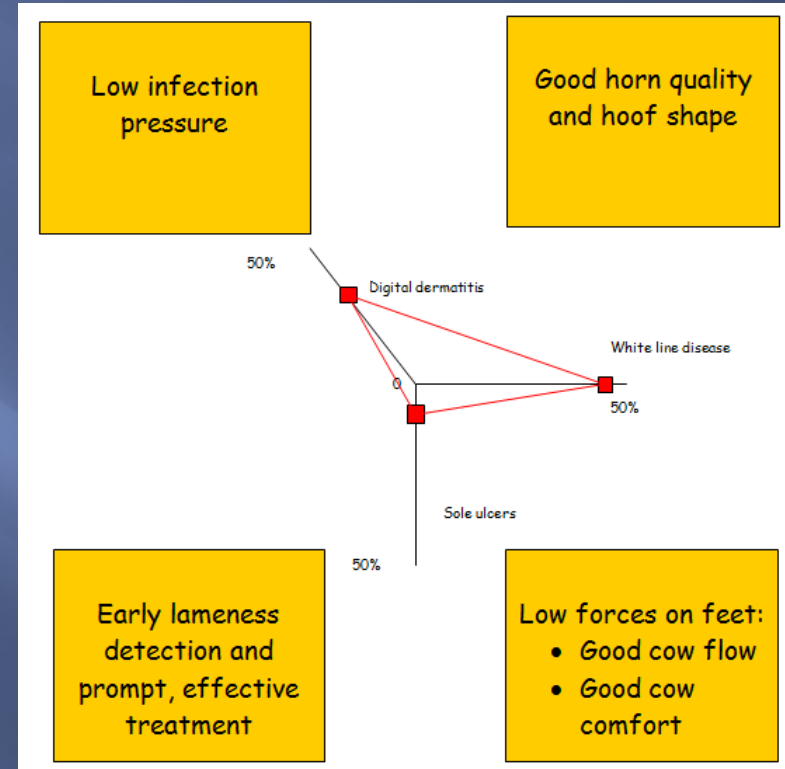
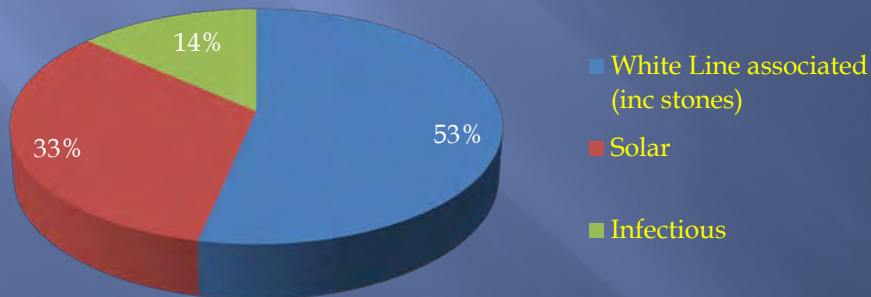
- Group 1
- Group 2
- Group 3
- Group 4

Use the data!



# What next?

- All MS 2 / MS 3 cows trimmed within 48 hrs.
- Accurate identification of lesions.
- Record / analyse lesions. (Not 1 disease!)
- Risk assessment.



**Q. 2 Sole ulcers are the biggest problem on my unit. What areas should I address? Pick your top 3.**

- 1) Increase foot bathing frequency.
- 2) Regular preventative foot trimming.
- 3) Reduce standing times waiting to be milked.
- 4) Cow comfort.
- 5) Cow tracks.
- 6) Reduce 'heat of ration'.

# Results?



Cow Comfort Index

=

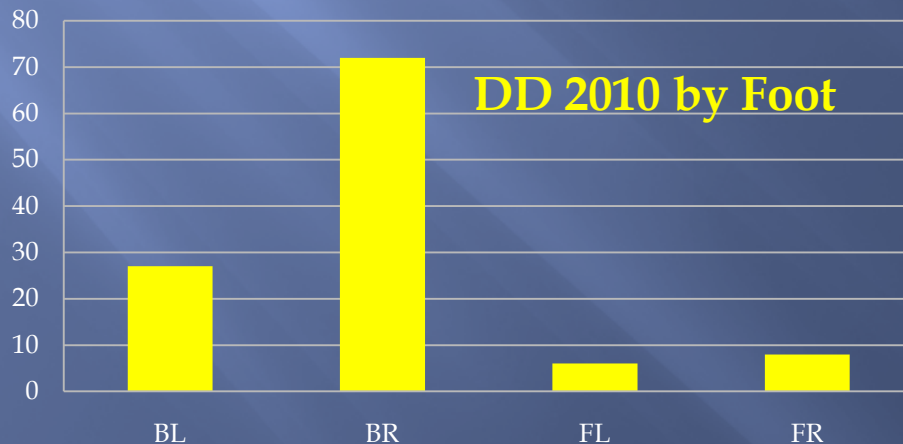
Cows lying in cubicle/  
Cows touching cubicle

# White Line Disease




# Infectious / Slurry Management

- Flow?
- Dilution?
- Chemical
- Longevity?
- Frequency?
- Groups?
- Ease?




# Take home messages!!

- ▣ Regular consistent mobility scoring.
- ▣ Prompt action/response to mobility score.
- ▣ Categorise lameness.
- ▣ Carry out risk assessment.
- ▣ Put the cow first.
- ▣ Dairy Co Healthy Feet Programme.
  - Mobility Mentors.
  - Mobility Contract.
  - Resources.



**Mobility Contract**

Agreed actions at:  
Manor Farm  
Date: 27/6/2011



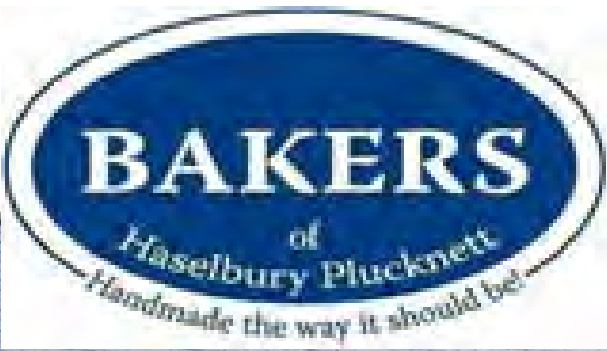
Those present: M..... and B..... H.....  
J..... and M.....  
Jon Reader (Synergy)

Success factor 1: Reduce infective pressure  
Success factor 2: Good herd quality and beef sheep  
Success factor 3: Reduce fences on farm, good air flow, good cow comfort  
Success factor 4: Early lameness detection and prompt effective treatment

Action	Person Responsible	Timescale	Progress
1) 20% Overall lameness (8% MS 3) by Christmas 2011.	All	Dec 2011	
2) 12% Overall lameness by Christmas 2012. No MS 3.	All	Dec 2012	
3) Mobility Score Fortnightly	B	Ongoing	Started
4) Immediate Action on Mobility Score (24-48 hrs)	M/J	Ongoing	
5) New Track	M	June '11	Completed
6) New foot crush	M	June '11	Completed
7) Remove post and rail fence at far end of track.	M	ASAP	
8) Concrete both ends of track and maintain.	M	ASAP	
9) Redesign collecting yard.	M	2012?	
10) Routine trimming at drying off.	M/J	ASAP	
11) Routine trim at 80 to 100 days post calving.	M/J	ASAP	
12) Maintain good equipment knives and sharpening wheel).	All	Ongoing	
13) Address old cubicles	M H	2012?	
14) Cull/vet treat recurrent cows	All	ASAP	
15) Daily footbathing (make easy!)	M/M	ASAP	

I pledge to tackle the above points, and monitor the results.

Signed:.....



**healthyfeet**  
PROGRAMME

**Thank you!!**

